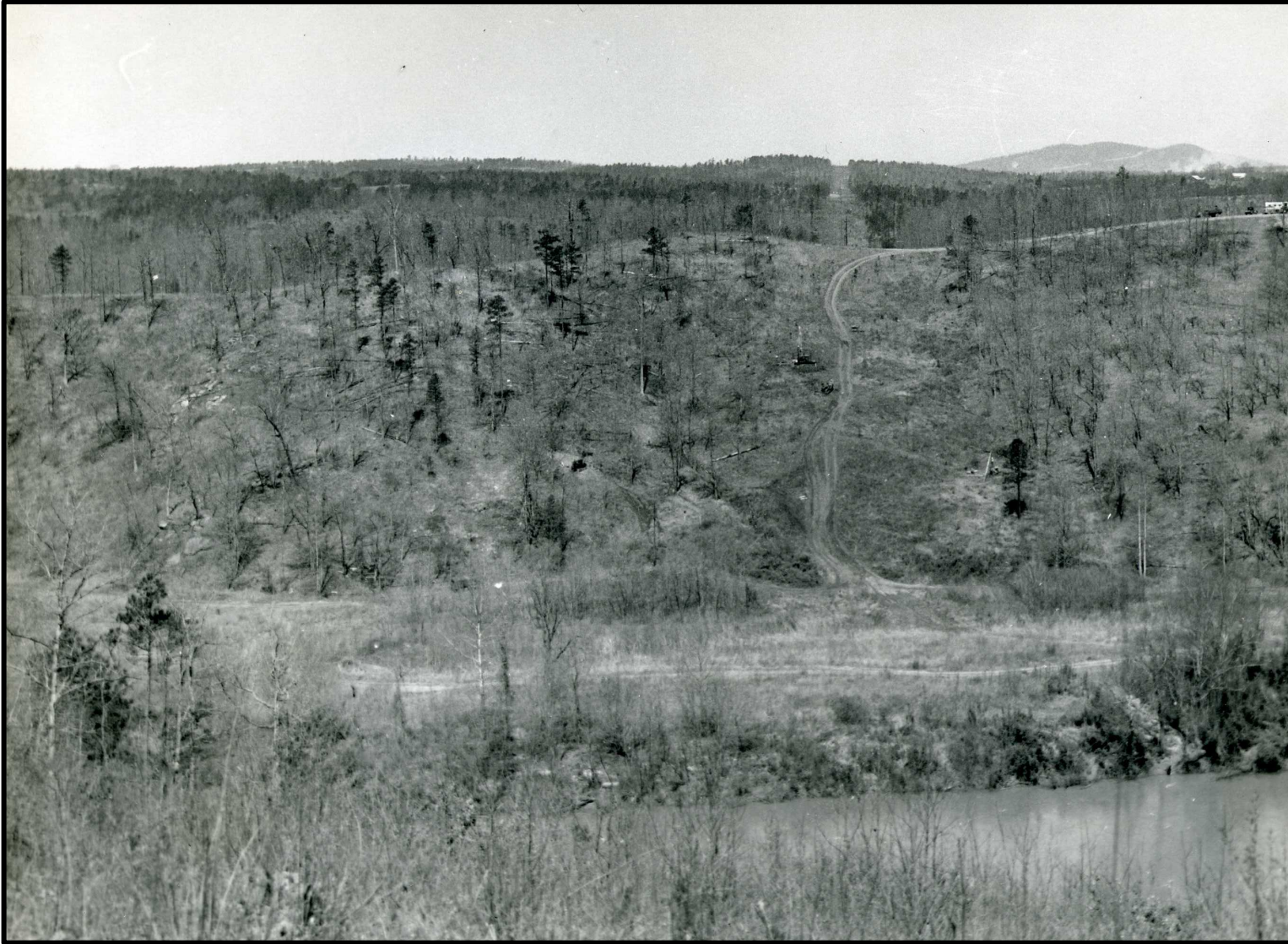


Picture This...

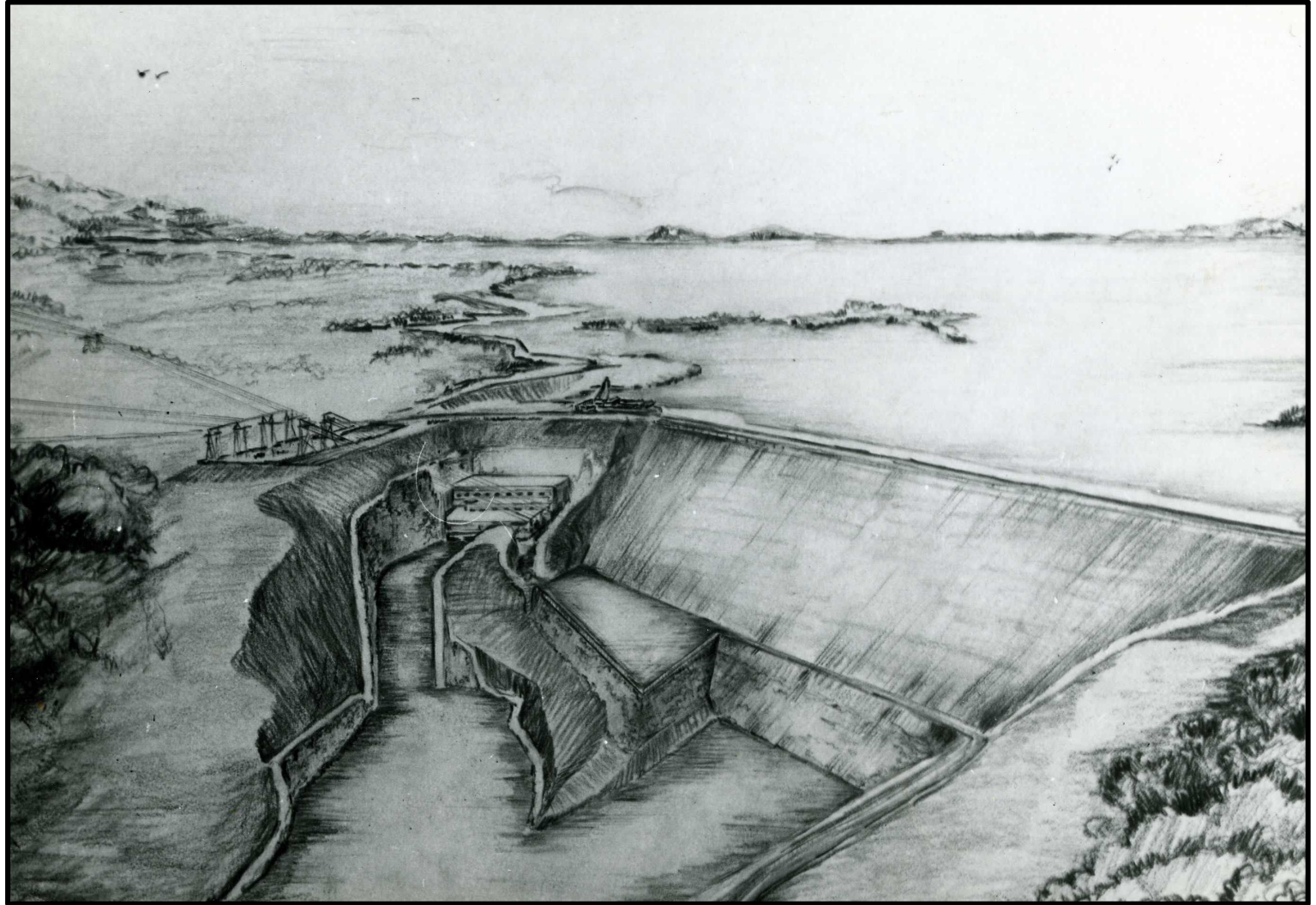


Sawnee Mountain in Forsyth County can be seen in the upper right background of this photograph.

Trails and access roads being used by the Corps of Engineers can be seen at the tailrace excavation site in the late 1940s. Once the trees and overburden have been removed excavation of the tailrace will begin.

Courtesy U.S. Army Corps of Engineers, Mobile District

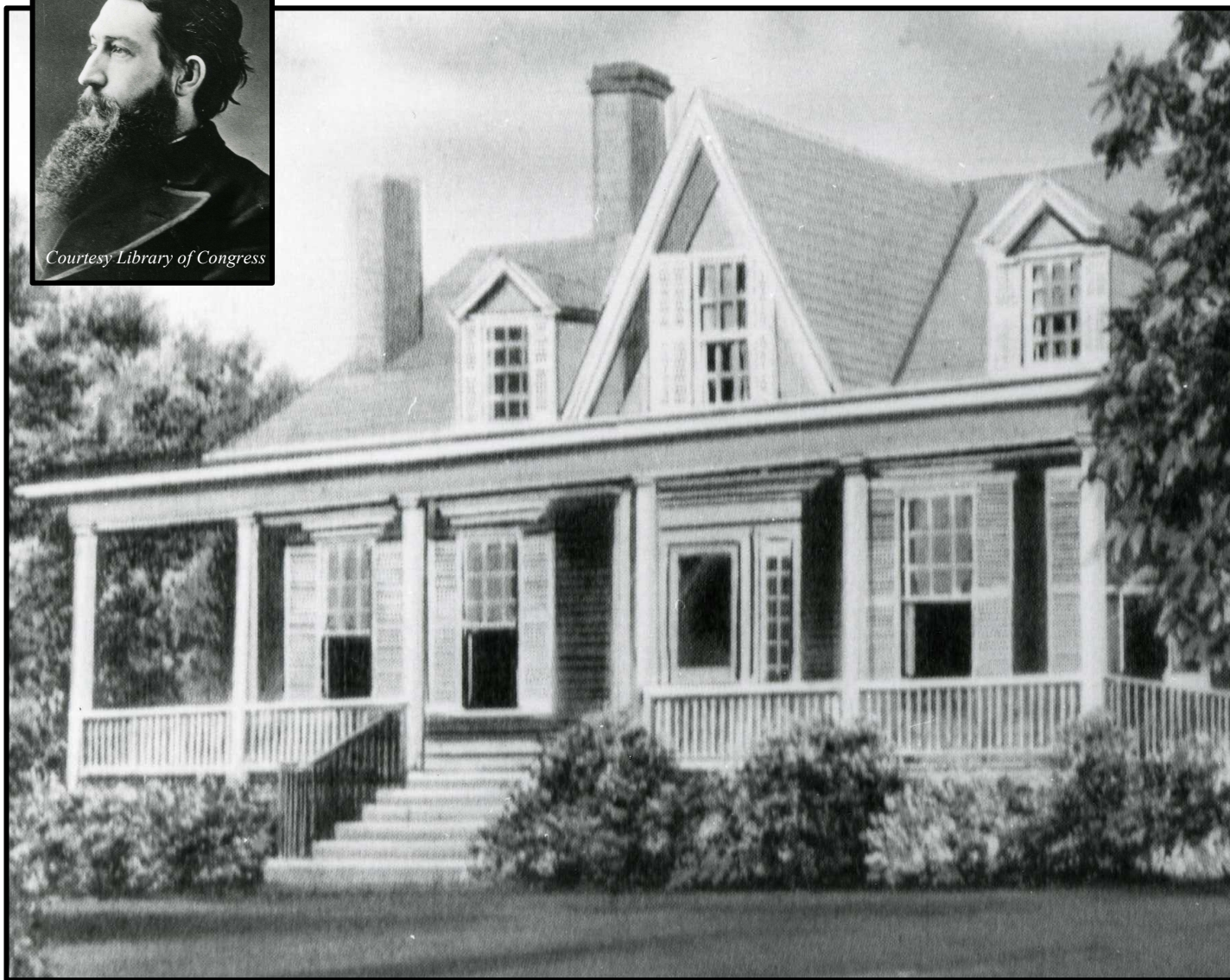
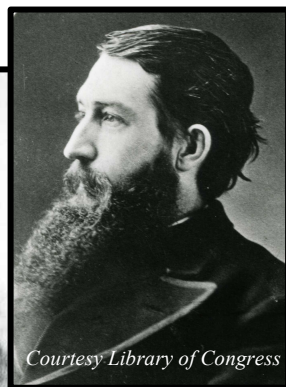
An architect's drawing of the proposed dam site, circa 1946. The Corps of Engineers originally planned on constructing a concrete gravity dam similar to Hartwell Dam on the Savannah River. Considerable savings and an abundance of building materials in the immediate area was the reason for the change. *Courtesy U.S. Army Corps of Engineers, Mobile District.*





In the early 1950s, Keith's Bridge, an old wooden covered bridge, that was a major route between Forsyth and Hall Counties, burned down. Although it would not be relocated it was temporarily rebuilt. The rebuilt bridge was used for several years then removed when the lake formed in the late 1950s. *(bottom inset)* Keith's Bridge as it appeared in 1952 shortly before burning down. *Courtesy Chestatee Regional Library from the Pictorial History of Hall County to 1950 by Sybil McRay*

An artists rendition of Sidney Clopton Lanier's birthplace in Macon, Georgia. Lanier (*top-inset*) was born on February 3, 1842. He served in the Confederate Army during the Civil War and was captured by Union forces in 1864. He was only 39 years old when he died of tuberculosis in 1881. Interment is in Greenmount Cemetery in Baltimore, Maryland. A huge pink boulder from Georgia was placed at the burial site with an inscription from one of his poems *Sunrise*, "I am lit with the sun".



Courtesy Georgia Department of Archives and History